

CORNER GRAB BAR with SafetyGrip®

Model SG760

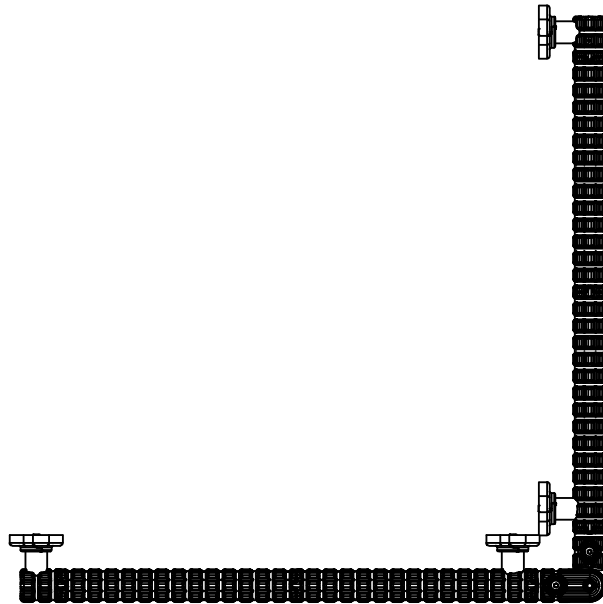


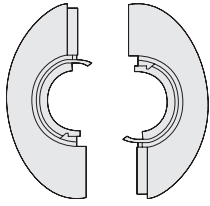
Table of Contents

- Warnings and Cautions for Kratos Grab Bars (1 Pages)
- SG760 Installation Instruction (6 Pages)

Specifications:

- Product Name: Corner Grab Bar
- Product#: SG760

Kit Contents



Mounting Plate Covers



10 Wood Screws



Hex Key

2 of each for each Mounting Plate

Tools Required

- Stud Finder
- Safety Glasses
- Power Drill
- Tape Measure
- 5/32 inch drill bit for pilot holes for the wood screws
- Philips screw driver
- Pencil


PRODUCT INFORMATION

Corner Grab Bars are Rustproof made from 304 stainless steel, including all Hardware.

The Corner Grab Bars feature our patented interlocking SafetyGrip® and the long-lasting protection of embedded antimicrobial AlphaSan® RC5000 silver ions powder for all parts except hardware.

For more details about AlphaSan®: <https://www.milliken.com/en-us/businesses/chemical/product/alphasan>

The Corner Grab Bars are assistive products that may be permanently affixed to any flat surface. Suitable for use anywhere that a Grab Bar is needed, they come in a variety of lengths and are equipped with oval-shaped mounting plates that allow them to be installed horizontally, vertically, or at any angle.

 **WARNING: FALL HAZARD.** Attach the grab bar securely to the wall. Failure to do so could result in death or serious injury.

- All Grab Bar mounting plates **MUST** be properly secured to the wall. Ideally, All Grab Bar mounting plates should be anchored to a wall stud.
- If you are unsure that you can properly install the grab bar, hire a qualified professional.

Compliance: ADA Compliant

INSTALLATION

STEP 1: Locate The Wall Studs Where You Want To Mount The Grab Bar

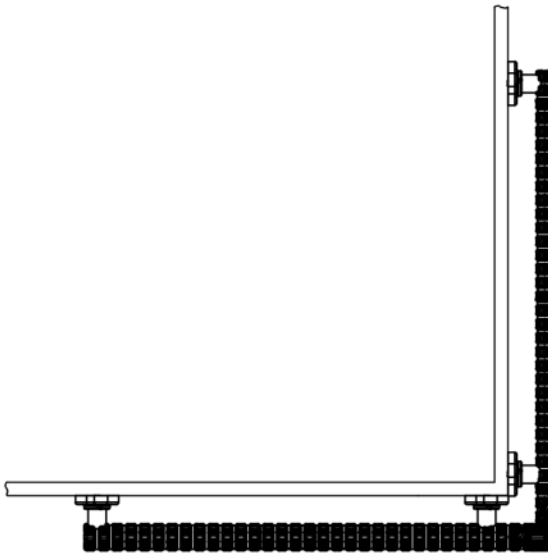
- First put on Safety glasses. Locate the wall studs.
- You may need to rotate the mounting plates to align with the wall studs. To do this, slightly loosen the screw that holds the mounting plate to the Grab Bar, turn the mounting plate appropriately, and then re-tighten the screw.
- When wall studs are not suitably spaced for where you want your Grab Bar you will need either:
 - a. Blocking
 - b. Wall reinforcement
 - c. To use the correct drywall fasteners

NOTE: Dry wall fasteners are not supplied in this kit.



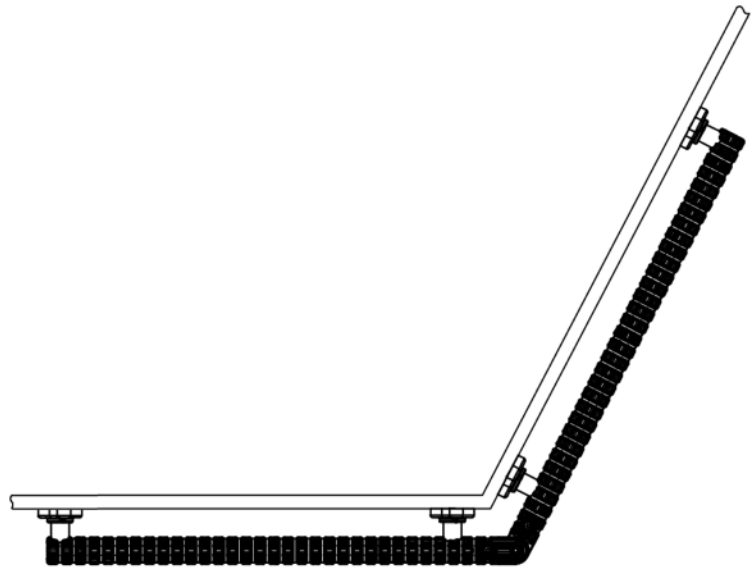
INSTALLER NOTE:

- To set the angle of the Grab Bar, loosen the hinge bolt, hold the Grab Bar against the wall where you want to install it and re-tighten the hinge bolt.
- Then follow Steps 1 to 4.



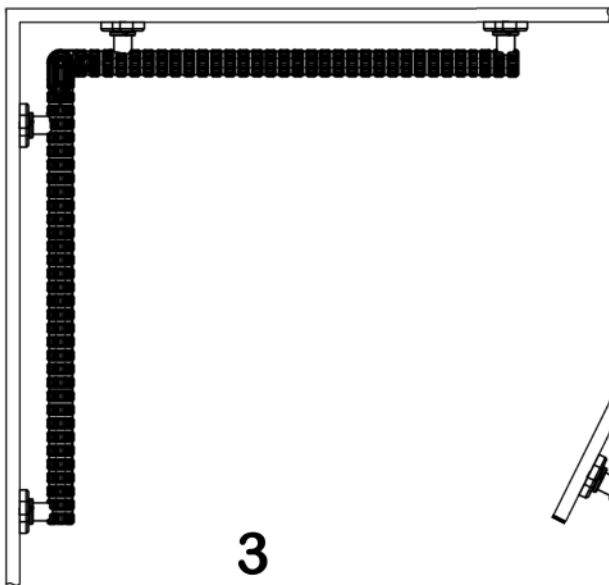
1

Outside corner 90 degrees



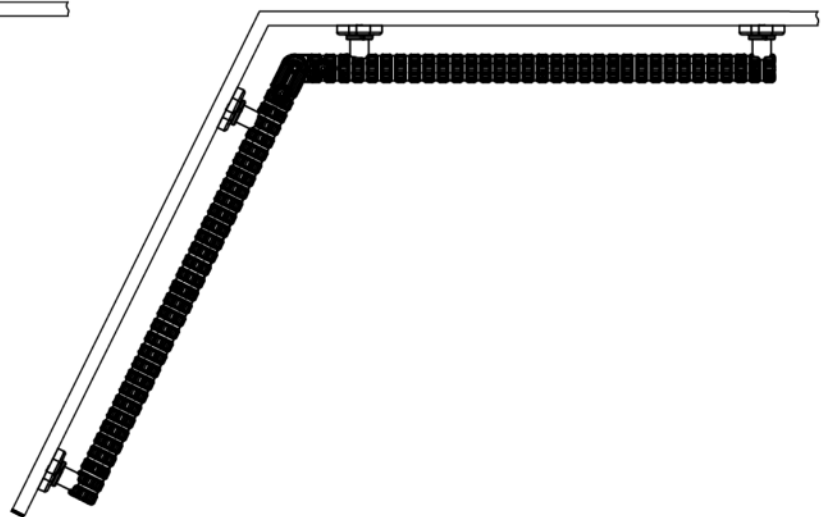
2

Outside angled corner



3

Inside corner 90 degrees



4

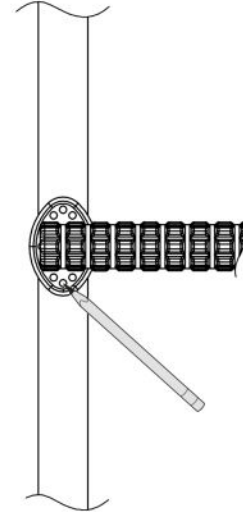
Inside angled corner



STEP 2: Drill Holes

- Line up the Grab Bar Mounting plate on the wall.
- Mark where the wall studs are.
- Mark the holes,

WARNING: ELECTRICAL SHOCK HAZARD. When drilling into walls, always ensure that you avoid all electrical wires, cables, ducts, pipes and/or plumbing. Failure to do so could result in death, serious injury, or property damage.



STEP 3: Install Grab Bar

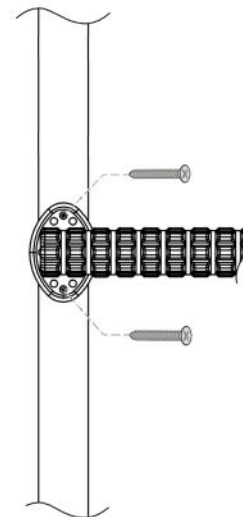
- Screw or fasten the Grab Bar to the wall.

Fasteners for Wooden Studs: Use two (2) wood screws per stud, supplied in this kit.

Fasteners for Steel Studs: Use at least two (2) fasteners per wall stud. Use high quality strong fasteners with a 1/4-inch (6 mm) fastener screw diameter. Toggle bolts are a good option.

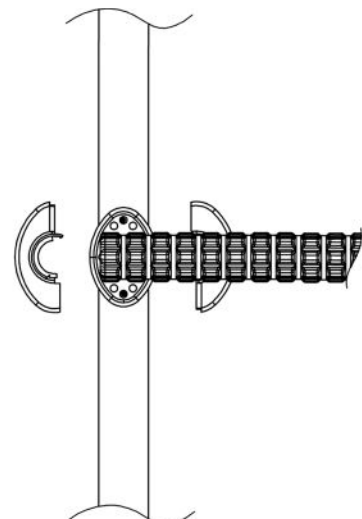
Fasteners for No Studs: If wall studs are not suitably placed, See Step 1.

INSTALLER NOTE: To ensure water does not seep into the holes you drilled, put silicone caulking onto the back of the mounting plate before you screw the grab bar to the wall.



STEP 4: Install Mounting Plate Cover

- Snap the mounting plate covers onto the mounting plate.



MAINTENANCE AND CLEANING

- **VERY IMPORTANT:** It is important to inspect the Product(s) frequently.
- Stop using immediately if damaged or broken, or if parts are missing.
- Stop using immediately if Product(s) shift out of the original installed position(s) until they are readjusted into the correct position.
- To clean Grab Bar, use a damp cloth with soap and water or mild household cleaner, wipe clean and dry before using.

Warranty

For Warranty details, refer to the Warranty details on the Hartmobility Inc. website: www.hartmobility.com/Warranty or call 1-800-998-0774 ext. 3



Questions. Comments. Concerns.

Contact Customer Service today.

info@Safetygrip.com

www.Safetygrip.com

www.Hartmobility.com

1(800) 998-0774

Hartmobility Inc.
424 Williamson-Zebulon Rd.
Williamson, GA 30295

Hartmobility reserves the right to update and revise our products. Refer to our website for the most up-to-date version of this document.

